

Pet Owner Beginner's Guide to Cybernetics

Raw meaty bones, healthy mouths and whole-body health

Main message

Start with the mouth. Feed for function. Watch the feedback. Raw meaty bones are food/medicine, but only a healthy, functional mouth can use that food/medicine properly.

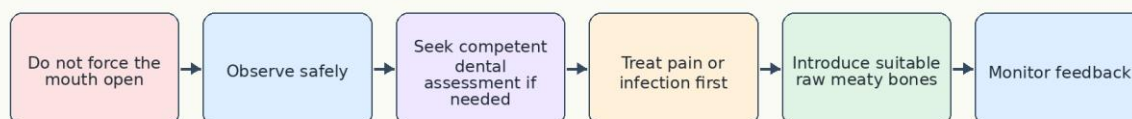
1. Why this guide begins in the mouth

Most pet-feeding advice begins with ingredients, brands, recipes, supplements or nutrient claims. Cybernetic thinking begins somewhere more practical: the dog or cat's mouth.

Bad breath, red gums, bleeding gums, loose teeth, retained baby teeth, drooling, reluctance to chew and altered eating behaviour are not minor cosmetic matters. They are signs that the interface between food, microbes, teeth, gums, immunity, behaviour and the rest of the body may be disturbed.

The first practical lesson is therefore simple: do not ask only what is in the bowl. Ask what the food does in the living animal over time.

Illustration 1: The Mouth-First Gateway



Cybernetic pet care begins with safe observation and mouth function.

Illustration 1. The Mouth-First Gateway.

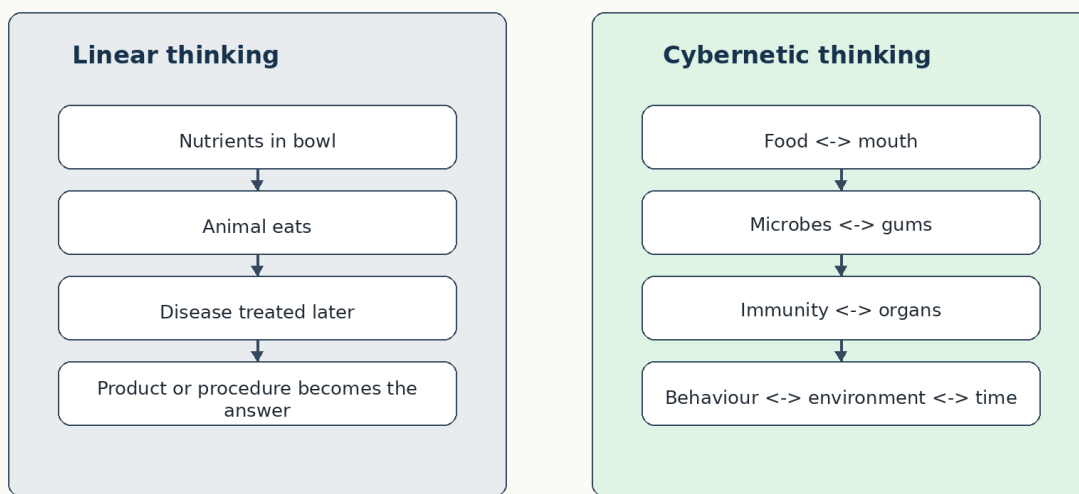
2. What cybernetics means for pet owners

Cybernetics is the study of regulation and feedback in living systems. For pet owners, it means looking beyond one-way cause-and-effect explanations. A dog or cat is not a machine into which nutrients are poured. It is a living system in which food, chewing, microbes, gums, saliva, immune response, organs, behaviour and environment influence each other every day.

Linear thinking asks: What nutrients are in this food? Cybernetic thinking asks: What feedback loops does this feeding system create or break?

That is why the mouth matters so much. It is where the outside world enters the animal. It is also where the carnivore's food should clean, massage, exercise, stimulate, condition and regulate.

Illustration 6: Linear Thinking vs Cybernetic Thinking



Cybernetics follows feedback loops, not isolated fragments.

Illustration 6. Linear Thinking versus Cybernetic Thinking.

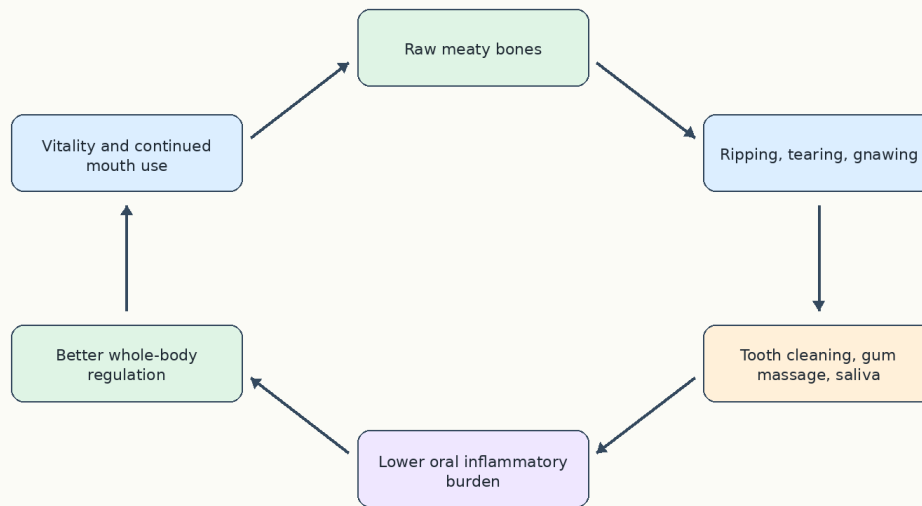
3. Raw meaty bones as food/medicine

Raw meaty bones are not merely a different ingredient list. They are food/medicine. They nourish the animal while also performing necessary biological work. Ripping, tearing, gnawing and chewing help clean teeth, massage gums, stimulate saliva, exercise jaws and neck muscles, condition the oral microbiome and occupy the mind.

This is why artificial formulations cannot compete on equal terms. They may imitate nutrient arithmetic, and some raw products may look more natural than kibble, but minced, cooked, powdered, sticky, soft or tub-based products do not reproduce the physical work of a carcass or raw meaty bone.

The emphasis on getting the mouth right through the physical impact of food/medicine virtually guarantees the right nutritional direction, because the food has to be real enough to perform its biological work.

Illustration 2: Raw Meaty Bones as Food/Medicine



Raw meaty bones nourish while also performing necessary biological work.

Illustration 2. Raw Meaty Bones as Food/Medicine.

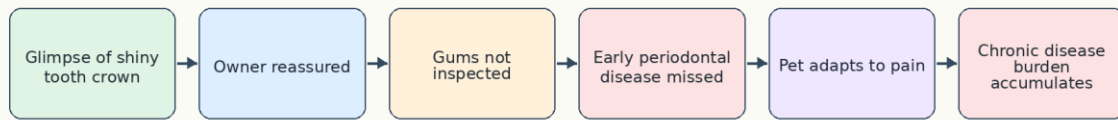
4. The hidden mouth problem

Many pet owners cannot see mouth disease, or they deny it. A quick glimpse of a shiny tooth crown is often taken as proof of health. But periodontal disease begins and progresses at the gum margin and below. Gum redness, smell, pain, pockets, loose teeth, retained baby teeth, crowding, abnormal bite and altered chewing can matter more than the visible crown.

Pets also hide pain. They may continue eating while avoiding one side of the mouth, swallowing without chewing, preferring soft food, dropping food, rubbing the face, drooling or becoming irritable. What looks like normal ageing may partly reflect chronic oral discomfort and inflammatory burden.

Nor can owners assume that every professional opinion is reliable. Many vets received limited training in periodontal disease and may have been trained to dismiss raw meaty bones. This is one reason pet owners need better questions, not blind confidence or reckless self-examination.

Illustration 4: The False Reassurance Trap



A shiny tooth crown is not proof of a healthy mouth.

Illustration 4. The False Reassurance Trap.

5. Safe observation: do not force the mouth

Examining a dog or cat's mouth can be dangerous. Do not force the mouth open, put fingers between the teeth, wrestle, frighten or punish the animal. A painful or frightened pet may bite or scratch.

Instead, observe safely. Smell the breath. Watch how the animal eats. Look only when the lips lift naturally or when the animal is relaxed. Record clues. Take photos or video only if safe. Then seek assessment when needed.

- Breath: bad, sour, bloody or pus-like smell is a warning sign.
- Eating: swallowing whole, dropping food, one-sided chewing or refusing harder pieces may indicate pain.
- Behaviour: pawing, face rubbing, drooling, irritability or reduced play can be clues.
- Visible clues: red gum margins, brown tartar, swelling, bleeding, retained baby teeth or broken teeth matter.
- History: soft, processed, cooked, minced or mushy diets increase concern because the mouth has lacked proper physical work.

6. Dentistry and raw meaty bones belong together

The successful clinical method is not raw meaty bones alone and not dentistry alone. It is restoration and maintenance: deal with the diseased mouth, then maintain the mouth with suitable raw meaty bones food/medicine.

Key principle

Raw meaty bones are not a substitute for dentistry where dentistry is needed. Dentistry is not a substitute

for raw meaty bones where lifelong natural mouth maintenance is needed.

This matters especially for puppies and kittens with retained baby teeth, misshapen mouths or abnormal bites, and for older animals with established periodontal disease. A painful mouth may need treatment before the animal can comfortably and safely use raw meaty bones.

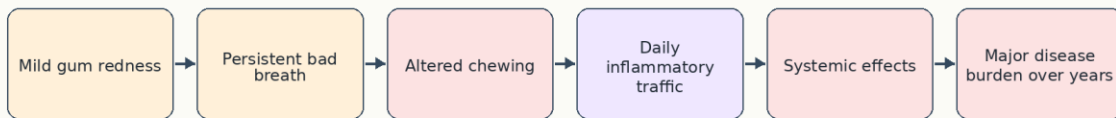
Cost is a real obstacle. Proper diagnostic handling, anaesthesia and dental work can be expensive. But chronic mouth disease is also expensive: in suffering, repeated veterinary visits, drugs, procedures, lost vitality and possible systemic effects. Pet owners should ask for staged plans: urgent pain and infection control first, necessary dental work, then maintenance through appropriate raw meaty bones.

7. Small disease over long time can become big disease

Cybernetics pays attention to time, repetition and feedback. A small inflammatory signal repeated every day for years may matter as much as, or more than, a dramatic short-term infection. Low-grade gum disease is not harmless merely because it looks minor.

The key question is not just how large the lesion looks today. The question is how long the mouth has been sending microbial, inflammatory, enzymatic and pain signals through the body, and how those signals alter chewing, immunity, organs, behaviour and ageing.

Illustration 5: Small Disease x Long Time = Big Damage



Low-grade does not mean low-risk when the signal is continuous.

Illustration 5. Small Disease x Long Time = Big Damage.

8. Beware incomplete advice

Many conventional veterinary advisers dismiss raw meaty bones without explaining how their alternative will maintain tooth cleaning, gum massage, jaw exercise, saliva flow, microbiome balance and long-term periodontal health.

Many BARF, PMR, RAW, influencer and junk-raw systems make the opposite mistake. They talk about ingredients, ratios, supplements, tubs, patties or recipes while failing to begin with the mouth, dentistry and periodontal disease.

The label raw is not enough. The question is whether the system allows the animal to function as a carnivore.

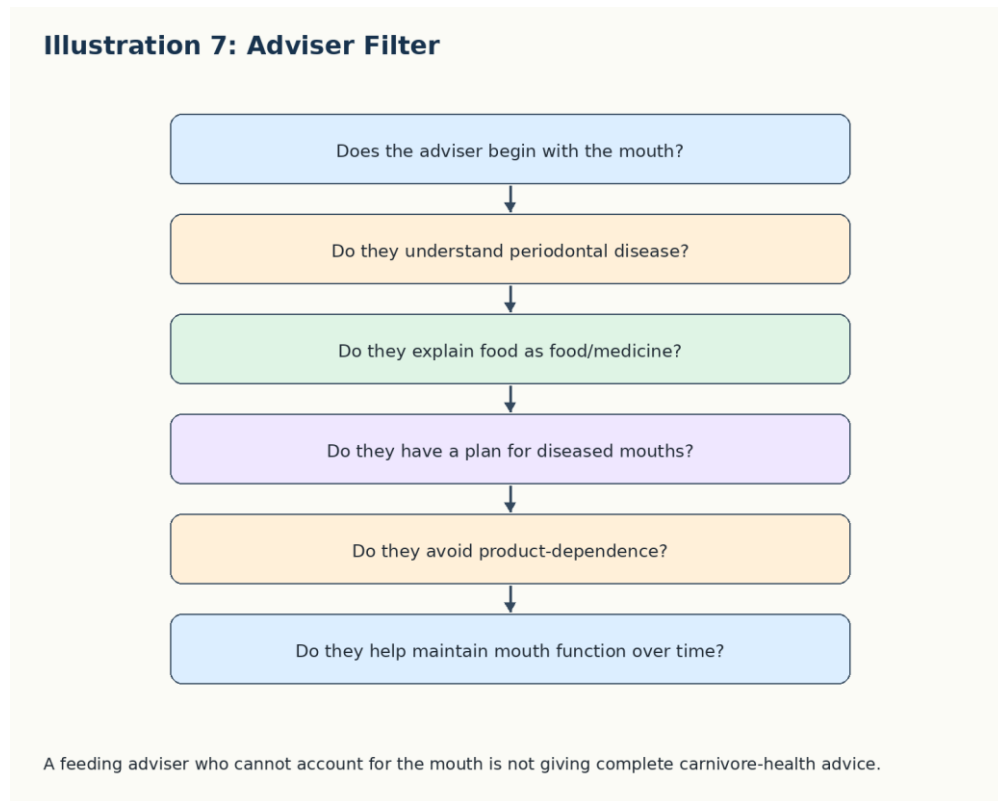


Illustration 7. Adviser Filter.

9. The pet-owner three questions test

Before accepting dietary advice, ask three questions.

1. Does this advice preserve the carnivore's need to rip, tear, gnaw and clean the mouth?
2. Does it require attention to dental health before and after diet change?
3. Does it help escape the processed pet-food system, or does it create another product-dependent system?

Illustration 8: Pet Owner Three Questions Test

1. Does this advice preserve ripping, tearing, gnawing and mouth cleaning?

2. Does it require attention to dental health before and after diet change?

3. Does it help escape the processed pet-food system, or create another dependency?

Use these questions before accepting dietary advice.

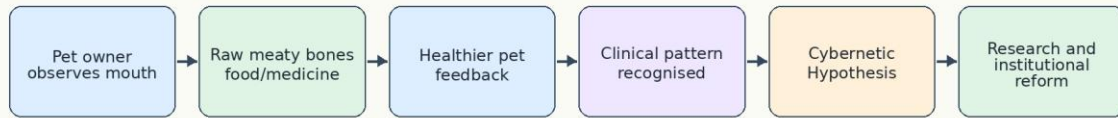
Illustration 8. Pet Owner Three Questions Test.

10. The larger framework

This guide focuses on pets because the dog or cat's mouth makes the problem visible. But the Cybernetic Hypothesis of Periodontal Disease is larger than pet feeding. It is an attempt to replace narrow, linear thinking with a biological systems framework.

The particular case is the pet's mouth. The larger framework is biological regulation. The hoped-for destination is a new way of thinking, teaching, researching and caring in veterinary science, dentistry, medicine, ecology and public health.

Illustration 9: From Pet Mouth to Paradigm Shift



The pet mouth is the doorway. The destination is a new framework for chronic disease.

Illustration 9. From Pet Mouth to Paradigm Shift.

11. Read next

For pet owners and deeper readers:

- [Cybernetic Hypothesis web page](https://www.thepetfoodcon.com/cybernetic-hypothesis-of-periodontal-disease-in-mammalian-carnivores/) (https://www.thepetfoodcon.com/cybernetic-hypothesis-of-periodontal-disease-in-mammalian-carnivores/)
- [Raw Meaty Bones: Promote Health](https://www.thepetfoodcon.com/RMB) (https://www.thepetfoodcon.com/RMB)
- [Why Not BARF](https://rawmeatybones.com/petowners/whynotBARF.php) (https://rawmeatybones.com/petowners/whynotBARF.php)
- [Raw Meaty Bones Promote Health case report \(December 1992\)](https://rawmeatybones.com/pdf/RMBPromHealthDec92.pdf) (https://rawmeatybones.com/pdf/RMBPromHealthDec92.pdf)
- [Three Part Test](https://rawmeatybones.com/newsletters/archive/6-5%20Dec%202006%20-%20Three%20Part%20Test.pdf) (https://rawmeatybones.com/newsletters/archive/6-5%20Dec%202006%20-%20Three%20Part%20Test.pdf)
- [Raw meaty bones essentials: food/medicine concept \(June 2018\)](https://rawmeatybones.com/pdf/C&T%205682%20T%20Lonsdale%20Raw%20meaty%20bones%20essentials%20June%202018.pdf) (https://rawmeatybones.com/pdf/C&T%205682%20T%20Lonsdale%20Raw%20meaty%20bones%20essentials%20June%202018.pdf)
- [Original cybernetic paper PDF](https://rawmeatybones.com/pdf/periodontal-cyber.pdf) (https://rawmeatybones.com/pdf/periodontal-cyber.pdf)
- [Journal of Periodontal Research cybernetic framework paper](https://onlinelibrary.wiley.com/doi/epdf/10.1111/jre.70118) (https://onlinelibrary.wiley.com/doi/epdf/10.1111/jre.70118)